

# Photometric Report

ERA 800 – Medium

MARTIN PROFESSIONAL R&D OPTICAL LABORATORY

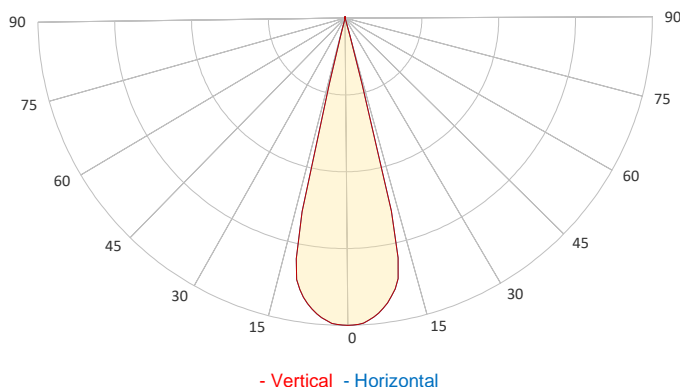
## GENERAL SPECIFICATIONS

Total Fixture Output:	35000 lm
Light Engine Output:	70 klm
Efficacy:	31 lm/W
Lens Option:	N/A
Beam Angle (50%):	6-49°
Field Angle (10%):	°
Cut-off Angle (3%):	°
CRI:	70
CQS:	67
TM-30 Rf:	65
TM-30 Rg:	93
TLCI:	44
Color Temperature:	6900 K



## SAMPLE MEASUREMENT

POLAR PLOT

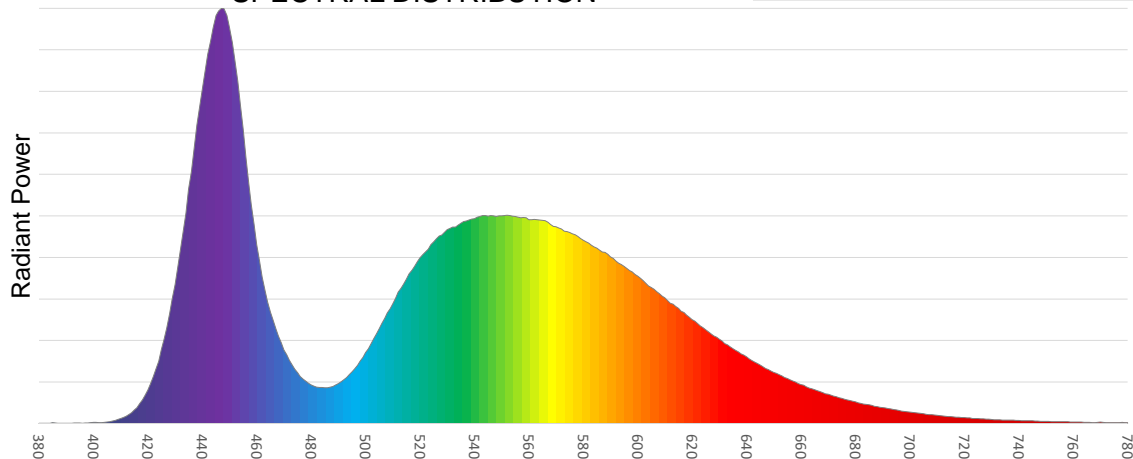


Catalog Number:	9025122052
Measured Output:	34670 lm
Measured Peak:	209560 cd
Consumed Power:	1161.5 W
Efficacy:	31.0 lm/W

Beam Angle (50%):	26.7°
Field Angle (10%):	29°
Cut-off Angle (3%):	30.8°

Measurement Condition:	
Ambient Temperature:	25° +/- 5° C
AC Supply:	230V/50Hz
Fan Mode:	
Fixture Warm-up Time:	60 minutes

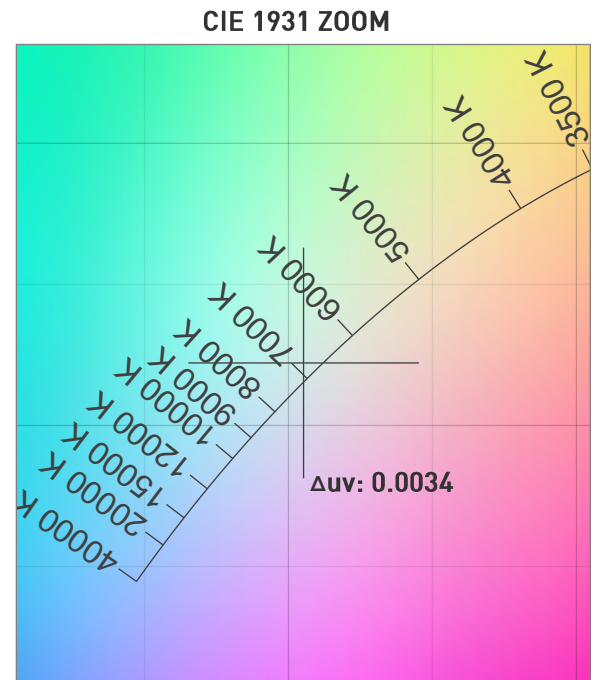
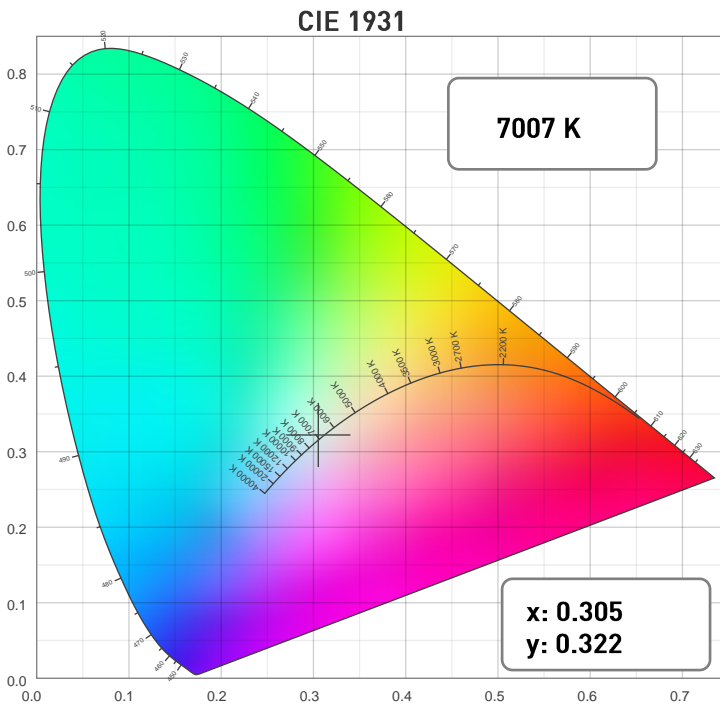
SPECTRAL DISTRIBUTION



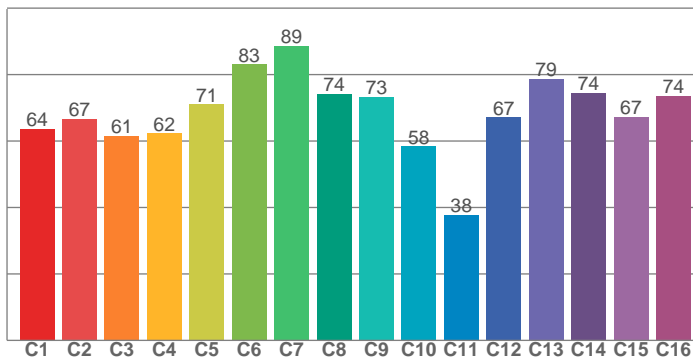
# Photometric Report

ERA 800 – Medium

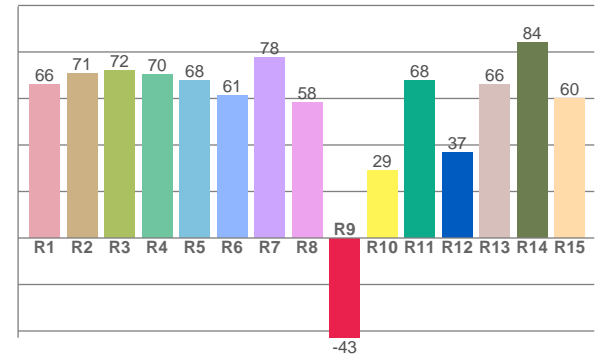
## CHROMATICITY



TM30: 68.7



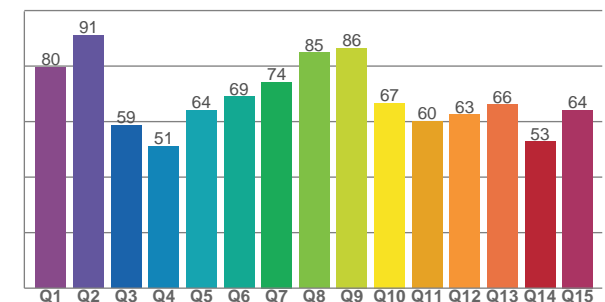
CRI: 68.0 (R1-R8)



## COLOR PARAMETERS

Color Temperature	Color Rendering Index	Red Component	Color Fidelity	Color Gamut
CCT	CRI	CRI R9	TM30 Rf	TM30 Rg
7007 K	68.0	-42.9	68.7	92.6

CQS: 66.6



Television Lighting Consistency Index	Color Quality Scale	Color Coordinate CIE 1931	Color Coordinate CIE 1931	Color Coordinate CIE 1964	Color Coordinate CIE 1964	Color Deviation from Black Body
TLCI	CQS	x	y	u	v	Δuv
44	66.6	0.305	0.322	0.195	0.309	0.0034

# Photometric Report

ERA 800 – Medium

TM30

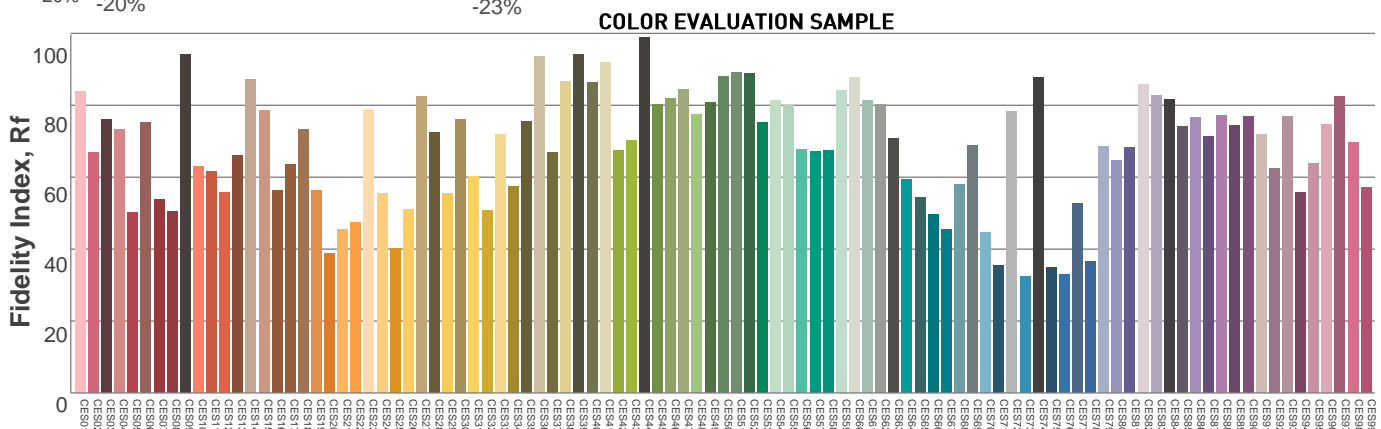
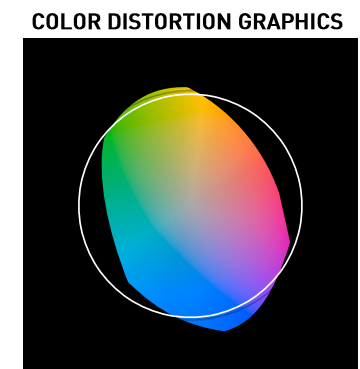
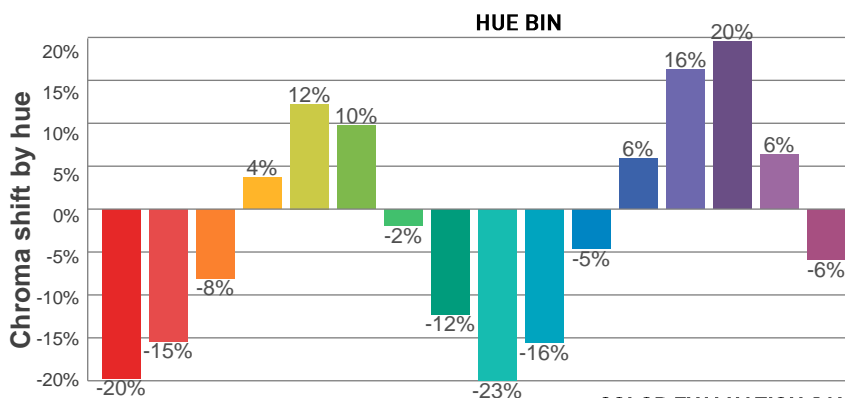
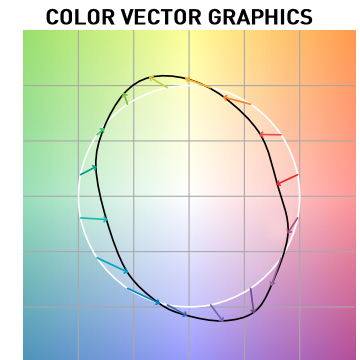
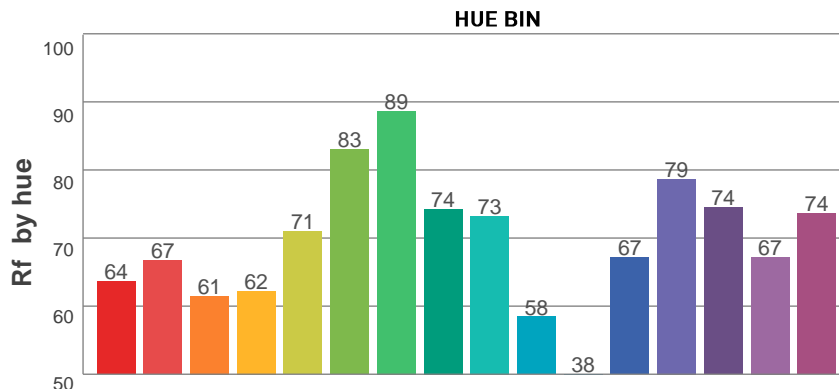
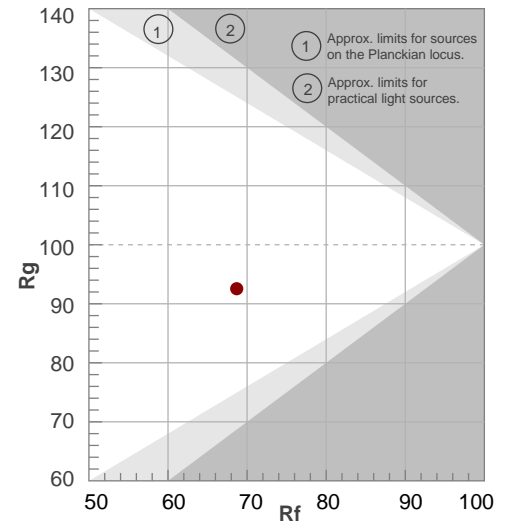
**Rf 68.7**

Fidelity index Rf

**Rg 92.6**

Gamut index Rg

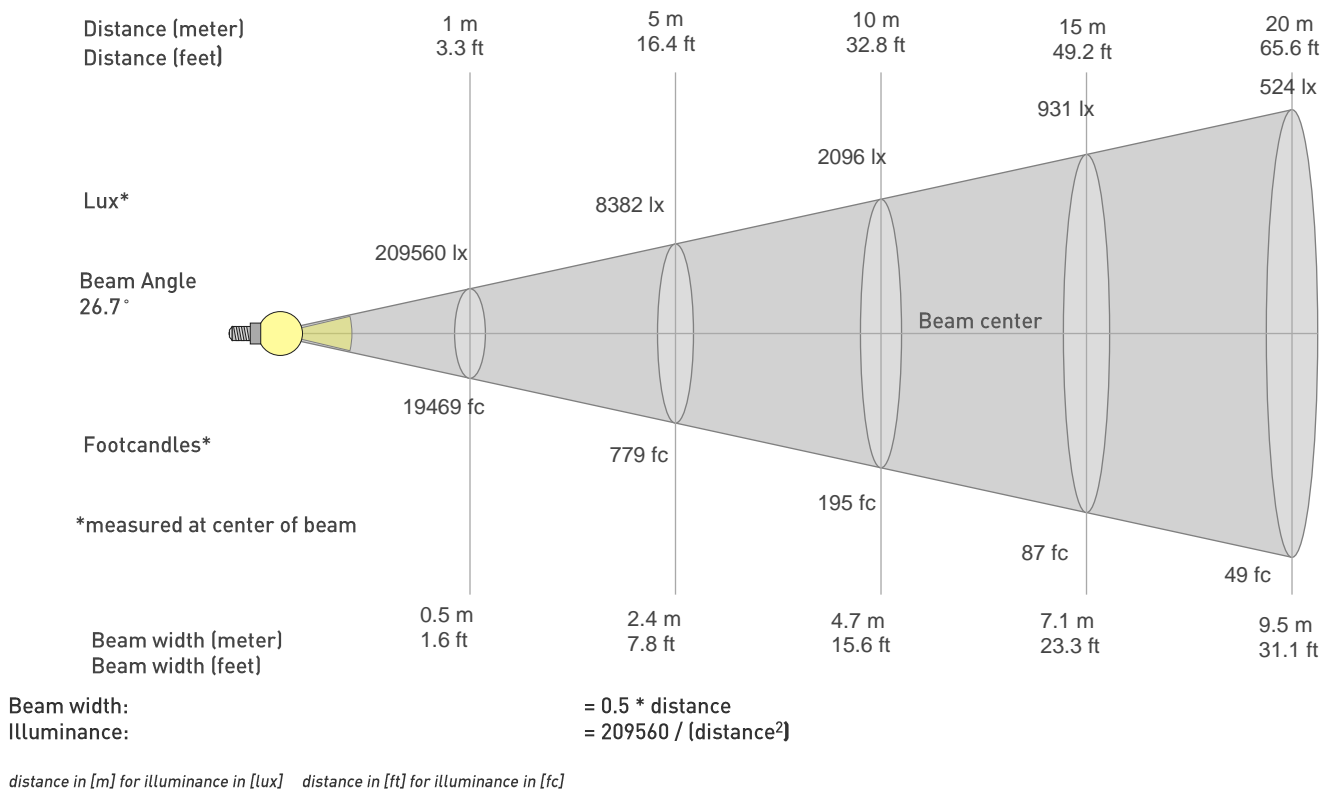
Hue Bin	R <sub>f</sub>	Graphic shifts (%)	
		Chroma	Hue
1	64	-20%	-5%
2	67	-15%	11%
3	61	-8%	23%
4	62	4%	23%
5	71	12%	14%
6	83	10%	-3%
7	89	-2%	-8%
8	74	-12%	-10%
9	73	-23%	6%
10	58	-16%	26%
11	38	-5%	31%
12	67	6%	18%
13	79	16%	8%
14	74	20%	-10%
15	67	6%	-25%
16	74	-6%	-15%



# Photometric Report

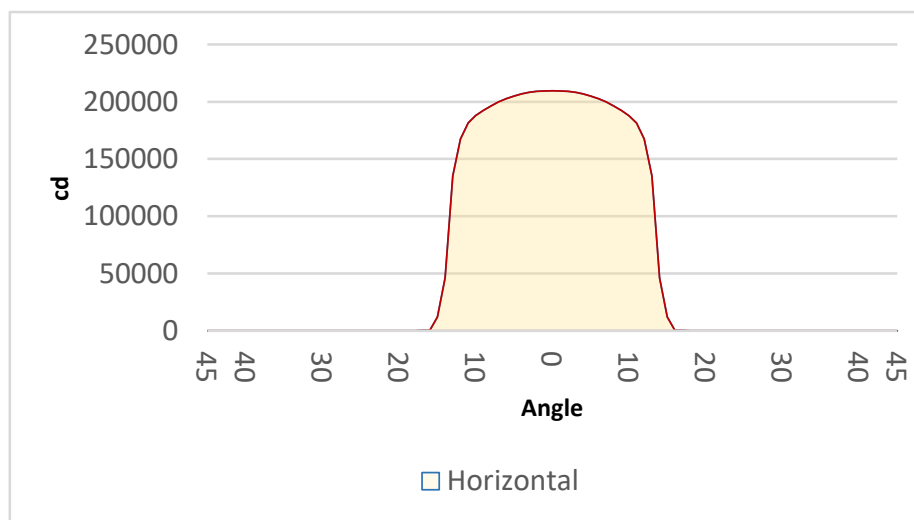
ERA 800 – Medium

## BEAM DETAILS



## BEAM ILLUMINANCE FROM 1-20M

1m	2m	3m	4m	5m	6m	7m	8m	9m	10m	11m	12m	13m	14m	15m	16m	17m	18m	19m	20m
3.3ft	6.6ft	9.8ft	13.1ft	16.4ft	19.7ft	23ft	26.2ft	29.5ft	32.8ft	36.1ft	39.4ft	42.7ft	45.9ft	49.2ft	52.5ft	55.8ft	59.1ft	62.3ft	65.6ft
209560lx	52390lx	23284lx	13097lx	8382lx	5821lx	4277lx	3274lx	2587lx	2096lx	1732lx	1455lx	1240lx	1069lx	931lx	819lx	725lx	647lx	580lx	524lx
19468.7fc	4867.2fc	2163.2fc	1216.8fc	778.7fc	540.8fc	397.3fc	304.2fc	240.4fc	194.7fc	160.9fc	135.2fc	115.2fc	99.3fc	86.5fc	76fc	67.4fc	60.1fc	53.9fc	48.7fc



BEAM ANGLE 50%	FIELD ANGLE 10%	CUTOFF ANGLE 3%
26.7°	29°	30.8°